

BRIDGE MOUNTAIN 7003 FEET CLASS 3

MILEAGE: 290 miles of paved road, 1.5 miles of poor dirt, 1.5 miles of rough 4WD dirt road.

DRIVE: From the state line at Primm, Nevada, drive 33 miles north on 1-15 to the Blue Diamond / Pahrump exit. Turn left (W) onto State Route 160. Follow this route over Mountain Springs Pass for 24 miles (passing the Potosi Mtn turnoff en route) to the signed, paved, Lovell Canyon road. (If coming from the Death Valley area, this turnoff is roughly 29 miles S of Pahrump on NV 160). Turn right (N) and follow this narrow road 7.5 miles to a dirt road turnoff on the right. There is a large camping area immediately across the road on the left; all low-clearance cars should park here. High clearance vehicles may turn right on the dirt road, marked by a small sign "549" just off the pavement. Ignore two left-branching roads in the first 1/4 mile. Pass through a gate (generally open) and ignore a faint road on the right shortly afterwards. About 1.5 miles after leaving the pavement, the road drops into the bottom of the wash for the first time. All 2WD vehicles should park here; there is room for a few cars in the wash. 4WD vehicles may continue up the extremely rough road for another 1.5 miles to the trailhead at Red Rock Summit. Park. There is room for about 10 cars.

CLIMB: The peak is not visible from the trailhead. Follow the maintained trail from the SE side of the parking area for 1 mile through piñon and juniper to the crest of the main N-S ridge. The trail proceeds S along the ridge and the summit becomes visible to the E. The trail passes an abandoned use trail on the left, rounds a bump to the S and descends the E-W ridge connecting the peak to the main ridge. The trail ends shortly after reaching an area of reddish slickrock (1 more mile), but the route continues and is marked by frequent ducks and parallel lines or arrows marked on the rock. Descend (several possibilities here) to the saddle on the ridge, then up and a bit left into the bottom of the obvious crack ascending the peak. Ascend (3rd class) either the crack itself or the slickrock face to the right, which is somewhat exposed but has plentiful holds. Most will find it easiest to ascend the face and descend the crack. Exit at the first easy ledge leading left into another crack/corner, which you ascend to the namesake natural bridge. Either ascend the steep rock in the alcove behind the bridge (using a dead tree for aid), or cross over the top of the bridge right-to-left to the area behind the bridge. Move to the right (5) of the "hidden forest" between you and the summit, and

descend a bit to a saddle at its right end. Ascend the final few hundred feet of the summit mass by climbing up and left from the saddle using one of several ledge and crack systems on the slabs, which are somewhat exposed in spots but the rock surface provides excellent friction. The final rocks at the top are easy. There is a fine view of Las Vegas and Lake Mead from the summit.

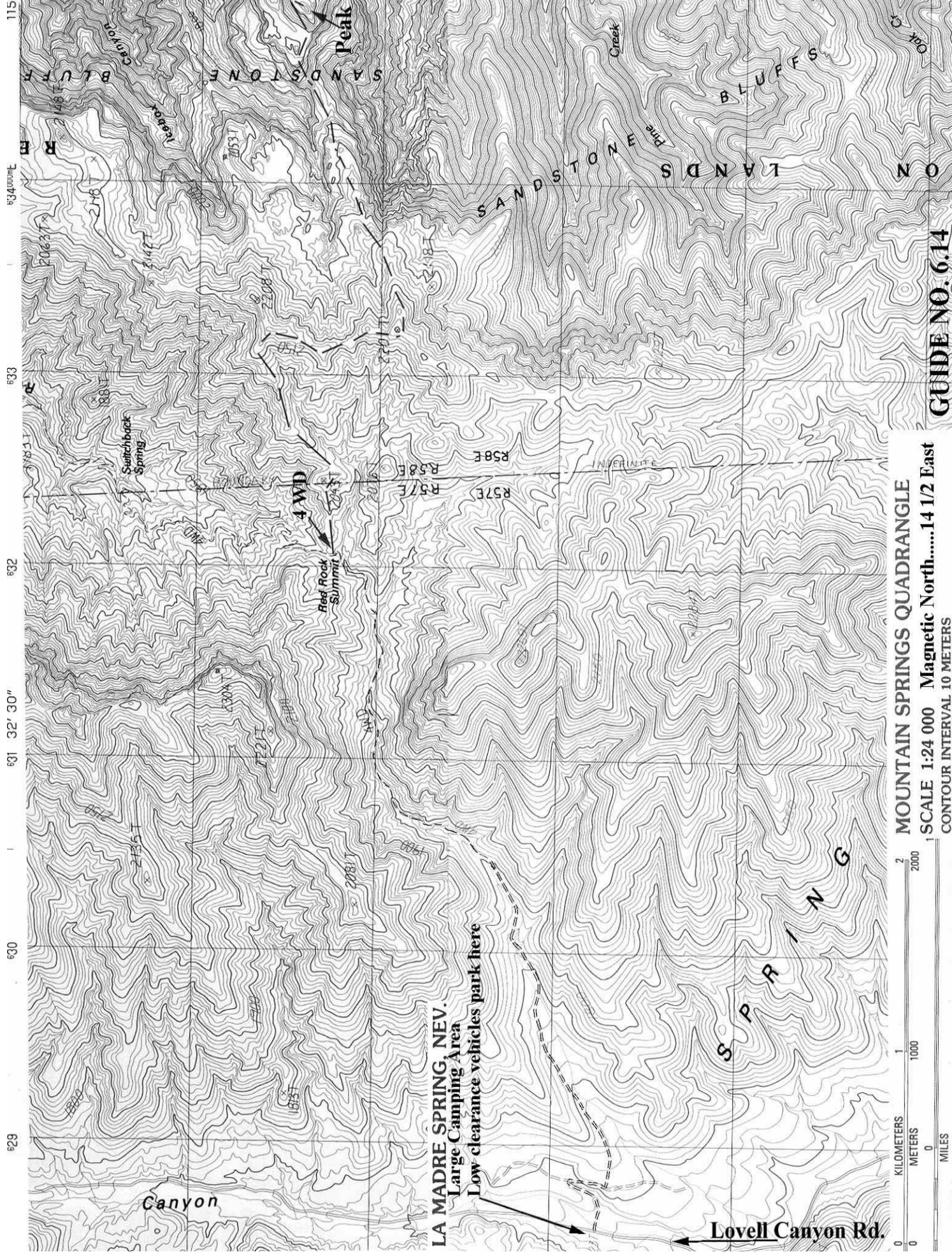
ROUND TRIP STATS/4WD: 2700 feet elevation gain (incl. 850' on the return), 6.5 miles, 6-7 hours

SIDELINES

1. The summit is the unnamed point at UTM 349994 on the La Madre Spring quadrangle, not the much lower point (6460') labeled Bridge Mountain on adjacent maps.
2. The dirt road to the trailhead is suitable only for experienced drivers with capable vehicles. This road continues over the summit and joins the Scenic Loop road in Red Rock Canyon to the E. The eastern side is 4WD-only and just as long as from the west, but is much easier driving. Access to the *trailhead* from the E is subject to a \$7 fee charged for driving the Scenic Loop, and is only available during daylight hours, but many will prefer this approach due to the easier road conditions. The road from the Willow Springs picnic area is very rough for the first few miles. There are two areas to park along the way which may be used to avoid the even worse road above. From the first pull out one may walk up the road, looking for a use trail on the left at approximately a mile. Follow this to the crest over a saddle, then follow a cairned route to the right, eventually meeting up with the route described above. Distance for the hike is closer to 9 miles from the first pull out.
3. There are no wood fires allowed in the area between April 15 and November 15.
4. Camping may be found at the parking area for the Lovell Canyon starting point. Camping may also be found at the Red Rock Canyon Campground, located east of the park on the south side of Charleston Blvd., just west of the shooting range.

© 2002 Desert Peaks Section, Sierra Club.

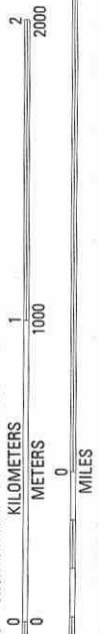
Revised 10-23-17



115° 30' 40" W
 115° 30' 30" W
 115° 30' 20" W
 115° 30' 10" W
 115° 30' 00" W
 115° 29' 50" W
 115° 29' 40" W
 115° 29' 30" W
 115° 29' 20" W
 115° 29' 10" W
 115° 29' 00" W
 115° 28' 50" W
 115° 28' 40" W
 115° 28' 30" W
 115° 28' 20" W
 115° 28' 10" W
 115° 28' 00" W
 115° 27' 50" W
 115° 27' 40" W
 115° 27' 30" W
 115° 27' 20" W
 115° 27' 10" W
 115° 27' 00" W
 115° 26' 50" W
 115° 26' 40" W
 115° 26' 30" W
 115° 26' 20" W
 115° 26' 10" W
 115° 26' 00" W
 115° 25' 50" W
 115° 25' 40" W
 115° 25' 30" W
 115° 25' 20" W
 115° 25' 10" W
 115° 25' 00" W
 115° 24' 50" W
 115° 24' 40" W
 115° 24' 30" W
 115° 24' 20" W
 115° 24' 10" W
 115° 24' 00" W
 115° 23' 50" W
 115° 23' 40" W
 115° 23' 30" W
 115° 23' 20" W
 115° 23' 10" W
 115° 23' 00" W
 115° 22' 50" W
 115° 22' 40" W
 115° 22' 30" W
 115° 22' 20" W
 115° 22' 10" W
 115° 22' 00" W
 115° 21' 50" W
 115° 21' 40" W
 115° 21' 30" W
 115° 21' 20" W
 115° 21' 10" W
 115° 21' 00" W
 115° 20' 50" W
 115° 20' 40" W
 115° 20' 30" W
 115° 20' 20" W
 115° 20' 10" W
 115° 20' 00" W
 115° 19' 50" W
 115° 19' 40" W
 115° 19' 30" W
 115° 19' 20" W
 115° 19' 10" W
 115° 19' 00" W
 115° 18' 50" W
 115° 18' 40" W
 115° 18' 30" W
 115° 18' 20" W
 115° 18' 10" W
 115° 18' 00" W
 115° 17' 50" W
 115° 17' 40" W
 115° 17' 30" W
 115° 17' 20" W
 115° 17' 10" W
 115° 17' 00" W
 115° 16' 50" W
 115° 16' 40" W
 115° 16' 30" W
 115° 16' 20" W
 115° 16' 10" W
 115° 16' 00" W
 115° 15' 50" W
 115° 15' 40" W
 115° 15' 30" W
 115° 15' 20" W
 115° 15' 10" W
 115° 15' 00" W
 115° 14' 50" W
 115° 14' 40" W
 115° 14' 30" W
 115° 14' 20" W
 115° 14' 10" W
 115° 14' 00" W
 115° 13' 50" W
 115° 13' 40" W
 115° 13' 30" W
 115° 13' 20" W
 115° 13' 10" W
 115° 13' 00" W
 115° 12' 50" W
 115° 12' 40" W
 115° 12' 30" W
 115° 12' 20" W
 115° 12' 10" W
 115° 12' 00" W
 115° 11' 50" W
 115° 11' 40" W
 115° 11' 30" W
 115° 11' 20" W
 115° 11' 10" W
 115° 11' 00" W
 115° 10' 50" W
 115° 10' 40" W
 115° 10' 30" W
 115° 10' 20" W
 115° 10' 10" W
 115° 10' 00" W
 115° 9' 50" W
 115° 9' 40" W
 115° 9' 30" W
 115° 9' 20" W
 115° 9' 10" W
 115° 9' 00" W
 115° 8' 50" W
 115° 8' 40" W
 115° 8' 30" W
 115° 8' 20" W
 115° 8' 10" W
 115° 8' 00" W
 115° 7' 50" W
 115° 7' 40" W
 115° 7' 30" W
 115° 7' 20" W
 115° 7' 10" W
 115° 7' 00" W
 115° 6' 50" W
 115° 6' 40" W
 115° 6' 30" W
 115° 6' 20" W
 115° 6' 10" W
 115° 6' 00" W
 115° 5' 50" W
 115° 5' 40" W
 115° 5' 30" W
 115° 5' 20" W
 115° 5' 10" W
 115° 5' 00" W
 115° 4' 50" W
 115° 4' 40" W
 115° 4' 30" W
 115° 4' 20" W
 115° 4' 10" W
 115° 4' 00" W
 115° 3' 50" W
 115° 3' 40" W
 115° 3' 30" W
 115° 3' 20" W
 115° 3' 10" W
 115° 3' 00" W
 115° 2' 50" W
 115° 2' 40" W
 115° 2' 30" W
 115° 2' 20" W
 115° 2' 10" W
 115° 2' 00" W
 115° 1' 50" W
 115° 1' 40" W
 115° 1' 30" W
 115° 1' 20" W
 115° 1' 10" W
 115° 1' 00" W
 115° 0' 50" W
 115° 0' 40" W
 115° 0' 30" W
 115° 0' 20" W
 115° 0' 10" W
 115° 0' 00" W

LA MADRE SPRING, NEV.
 Large Camping Area
 Low clearance vehicles park here

Lovell Canyon Rd.



MOUNTAIN SPRINGS QUADRANGLE
 SCALE 1:24 000 Magnetic North.....14 1/2 East
 CONTOUR INTERVAL 10 METERS

GUIDE NO. 6.14

4000
 3990
 3980
 3970
 3960
 3950
 3940
 3930
 3920
 3910
 3900
 3890
 3880
 3870
 3860
 3850
 3840
 3830
 3820
 3810
 3800
 3790
 3780
 3770
 3760
 3750
 3740
 3730
 3720
 3710
 3700
 3690
 3680
 3670
 3660
 3650
 3640
 3630
 3620
 3610
 3600
 3590
 3580
 3570
 3560
 3550
 3540
 3530
 3520
 3510
 3500
 3490
 3480
 3470
 3460
 3450
 3440
 3430
 3420
 3410
 3400
 3390
 3380
 3370
 3360
 3350
 3340
 3330
 3320
 3310
 3300
 3290
 3280
 3270
 3260
 3250
 3240
 3230
 3220
 3210
 3200
 3190
 3180
 3170
 3160
 3150
 3140
 3130
 3120
 3110
 3100
 3090
 3080
 3070
 3060
 3050
 3040
 3030
 3020
 3010
 3000
 2990
 2980
 2970
 2960
 2950
 2940
 2930
 2920
 2910
 2900
 2890
 2880
 2870
 2860
 2850
 2840
 2830
 2820
 2810
 2800
 2790
 2780
 2770
 2760
 2750
 2740
 2730
 2720
 2710
 2700
 2690
 2680
 2670
 2660
 2650
 2640
 2630
 2620
 2610
 2600
 2590
 2580
 2570
 2560
 2550
 2540
 2530
 2520
 2510
 2500
 2490
 2480
 2470
 2460
 2450
 2440
 2430
 2420
 2410
 2400
 2390
 2380
 2370
 2360
 2350
 2340
 2330
 2320
 2310
 2300
 2290
 2280
 2270
 2260
 2250
 2240
 2230
 2220
 2210
 2200
 2190
 2180
 2170
 2160
 2150
 2140
 2130
 2120
 2110
 2100
 2090
 2080
 2070
 2060
 2050
 2040
 2030
 2020
 2010
 2000
 1990
 1980
 1970
 1960
 1950
 1940
 1930
 1920
 1910
 1900
 1890
 1880
 1870
 1860
 1850
 1840
 1830
 1820
 1810
 1800
 1790
 1780
 1770
 1760
 1750
 1740
 1730
 1720
 1710
 1700
 1690
 1680
 1670
 1660
 1650
 1640
 1630
 1620
 1610
 1600
 1590
 1580
 1570
 1560
 1550
 1540
 1530
 1520
 1510
 1500
 1490
 1480
 1470
 1460
 1450
 1440
 1430
 1420
 1410
 1400
 1390
 1380
 1370
 1360
 1350
 1340
 1330
 1320
 1310
 1300
 1290
 1280
 1270
 1260
 1250
 1240
 1230
 1220
 1210
 1200
 1190
 1180
 1170
 1160
 1150
 1140
 1130
 1120
 1110
 1100
 1090
 1080
 1070
 1060
 1050
 1040
 1030
 1020
 1010
 1000
 990
 980
 970
 960
 950
 940
 930
 920
 910
 900
 890
 880
 870
 860
 850
 840
 830
 820
 810
 800
 790
 780
 770
 760
 750
 740
 730
 720
 710
 700
 690
 680
 670
 660
 650
 640
 630
 620
 610
 600
 590
 580
 570
 560
 550
 540
 530
 520
 510
 500
 490
 480
 470
 460
 450
 440
 430
 420
 410
 400
 390
 380
 370
 360
 350
 340
 330
 320
 310
 300
 290
 280
 270
 260
 250
 240
 230
 220
 210
 200
 190
 180
 170
 160
 150
 140
 130
 120
 110
 100
 90
 80
 70
 60
 50
 40
 30
 20
 10
 0