

OROCOPIA MOUNTAIN 3815 FEET CLASS 1

MILEAGE: 156 miles of paved road, 3.8 miles of good dirt, 0.4 miles of 4WD road

DRIVE/ROUTE A: See Map 1. From Indio, CA. drive 23 miles E on Interstate 10 to the signed Mecca-Twenty-nine Palms exit. Turn right (S) and drive 0.35 miles to the paved, signed Pinto Road. Turn left (E) here and go 0.6 miles to a good dirt road heading S. Turn right (S), crossing under high voltage power lines in 0.95 miles and bearing left at the fork just past the power lines (MC 133). Continue 2.85 miles S to a junction, bearing left at all forks encountered along the way. Further progress is barred by a rock barrier across the sand wash road directly S of this junction. 2WD's park here. 4WD's can continue by taking a sharp left up a steep hill and going 75 yards to a fork. Bear right (S) at the fork and drive 0.4 miles to the Orocopia Mountains Wilderness boundary. Park.

CLIMB/ROUTE A: See Map 1. From the 4WD parking area, walk 0.3 miles up the road to where it passes through a deep, narrow gully. Once across the gully, hike 0.5 miles S along the left bank of a large wash. Dropping into the wash here, follow it S for about 0.75 miles until you reach a fork with a large wash merging from the right (W) at UTM 133157. At this point leave the wash and hike SSW up the ridge directly in front of you. Near the crest of this ridge the peak will come into view. Either follow the ridgeline or contour around the right (W) side of it to a saddle NNE of the peak. From here climb SSW to the broad summit of Orocopia, where you'll have great views of the Salton Sea to the S, the San Jacinto and Santa Rosa ranges to the W and the Chuckwallas to the E.

ALTERNATE ROUTE: At approximately 2800', angle left up to ridge above and find the use trail, following it all the way to the summit.

ROUND TRIP STATS/4WD/ROUTE A: 1100 feet elevation gain, 4.5 miles, 4 hours

ROUND TRIP STATS/2WD/ROUTE A: 1350 feet elevation gain, 5.5 miles, 5 hours

DRIVE/ROUTE B: See Map 2. From the intersection of State Routes 111 and 195 in Mecca, CA. drive 10.1 miles S on SR 111 to signed Parkside Drive (0.3 miles S of highway milepost 8.0), opposite the entrance to the Salton Sea State Recreation Area. Turn left (E) here and go 1.7 miles to the road's end. Turn left (N) and drive 0.5 miles on the signed Desert Aire Road (excellent dirt) to its end at an aqueduct. Turn right (E) on the aqueduct frontage road and drive 3.5 miles to Siphon #28. Turn left (N) here on a high clearance 4WD mine road, following it less than 1.0 mile to the Orocopia Mountains Wilderness boundary. 2.7 miles into a canyon on Orocopia's S side. Park.

CLIMB/ROUTE B: See Map 2. Hike approximately 1.75 N up the mine road into a canyon on Orocopia's S side. Bearing right (E), ascend to the ridge line at point 1893. Turning left (N) here, follow the ridge to point 3297, then 0.75 miles ENE to the summit.

ROUND TRIP STATS/ROUTE B: 3550 feet elevation gain, 9 miles, 8 hours

OROCOPIA MOUNTAIN (CONTINUED)

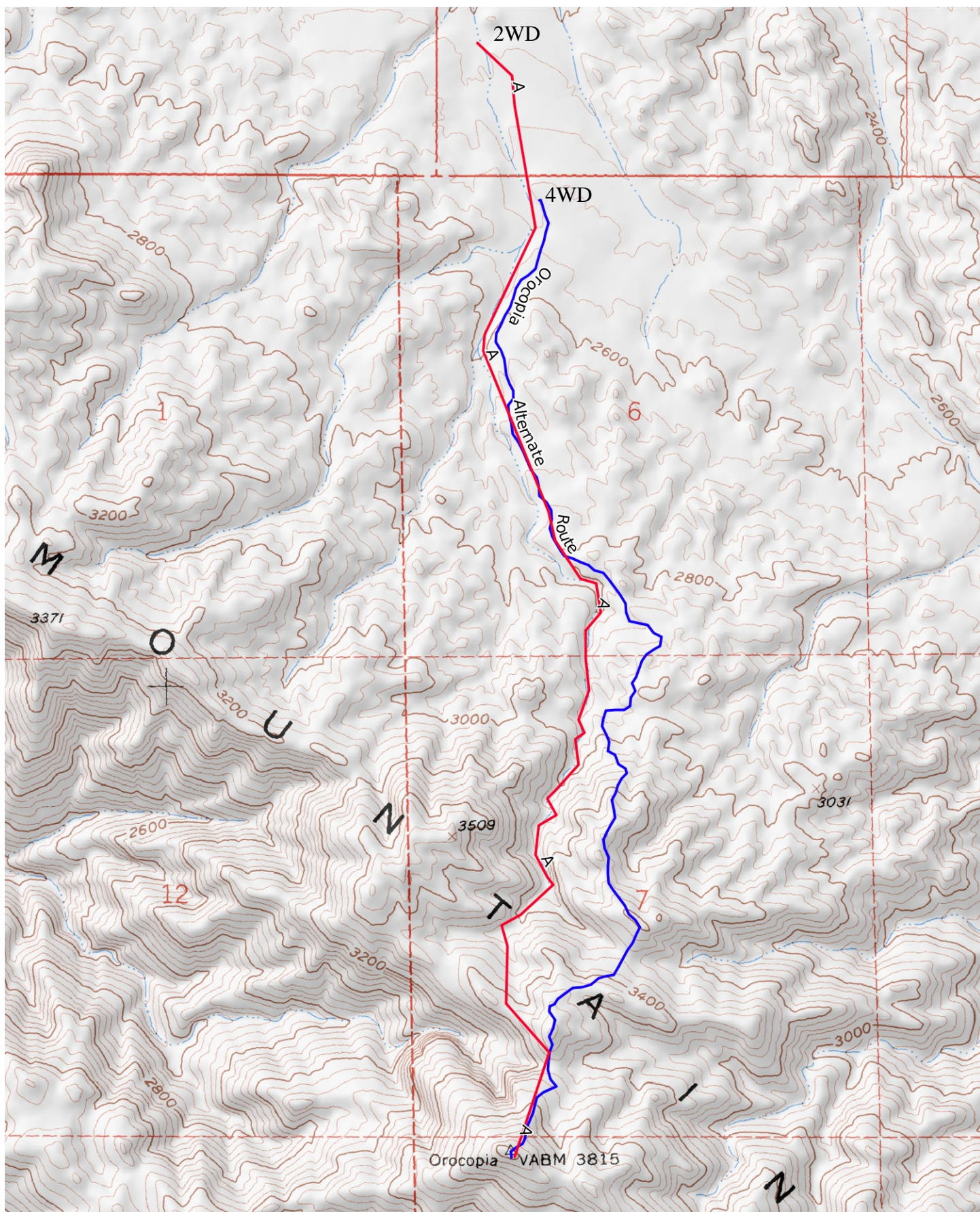
SIDELINES

1. Orocopia Mountain is located within the boundaries of the Orocopia Mountains Wilderness Area. This new wilderness area was created as part of the California Desert Protection Act of 1994, Public Law 103-433, Section 102 (44). The Orocopia Mountains Wilderness Area encompasses approximately 40,735 acres of land and is managed by the Bureau of Land Management (BLM).

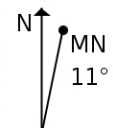
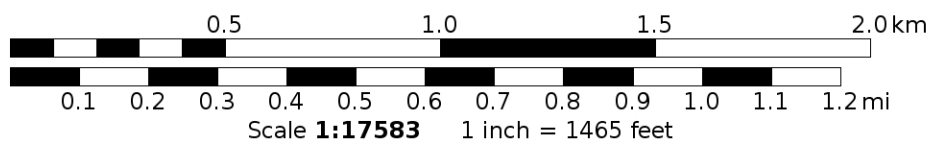
2. The name Orocopia is most probably a corruption of the Spanish “Oro Copa”, which means gold cup. The Orocopia Mountains are historically known as a gold mining area, with one of the largest operators being the Oro Copia Mining Company.

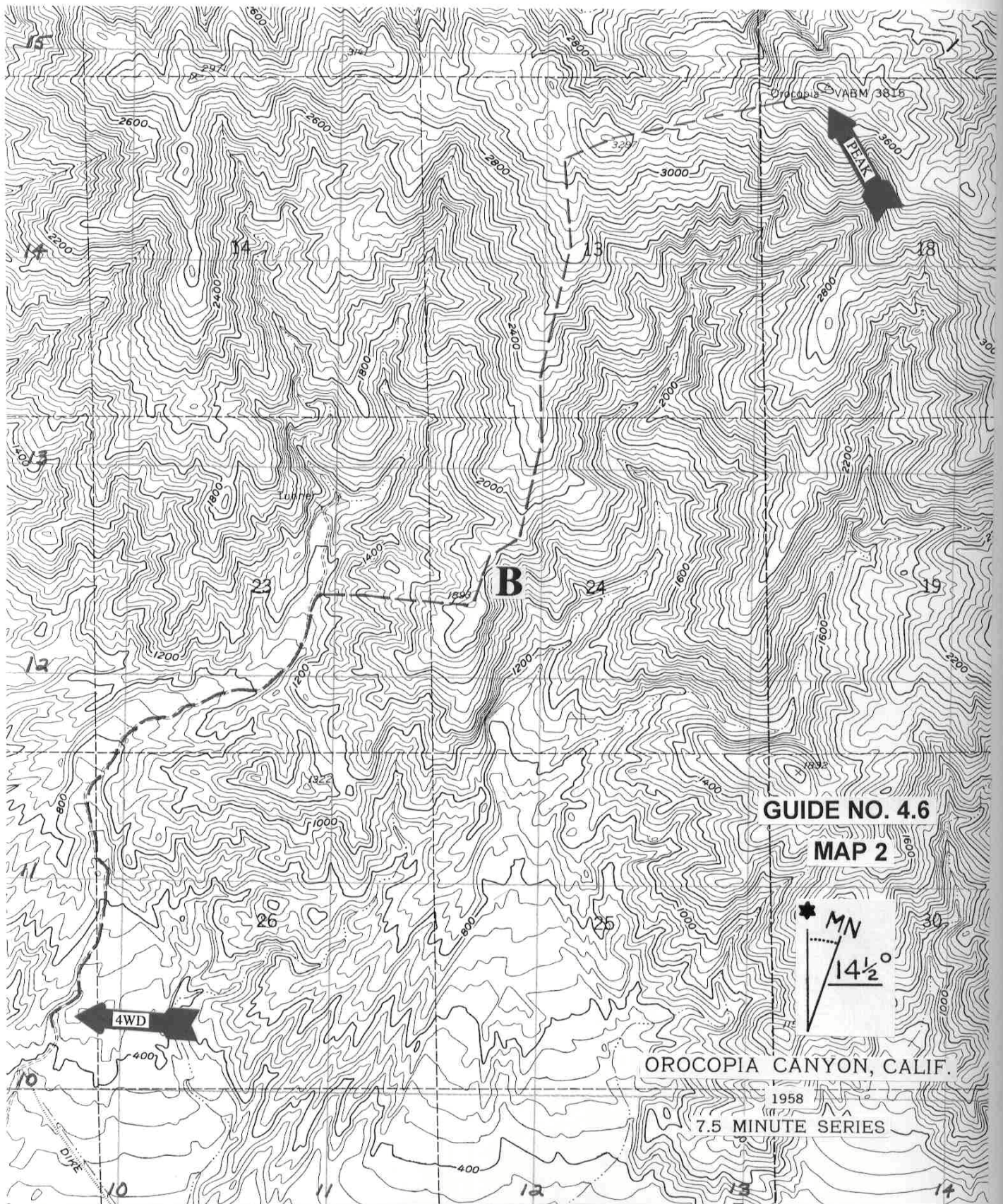
3. The area west of Orocopia Mountain contains many interesting sites for exploration, including Hidden Spring and Sheep Hole Palm oases as well as a place known as the Grottoes. Widespread abuse of this unique area by ORV's over many years precipitated its inclusion as wilderness in the California Desert Protection Act of 1994, Public Law 103-433, Section 102 (37). The area is now known as the Mecca Hills Wilderness area and encompasses approximately 24,200 acres of land administered by the Bureau of Land Management (BLM). A narrow dirt road corridor between this wilderness and the Orocopia Wilderness to the east is seasonally closed to vehicular traffic in order to protect the well-being of a local bighorn sheep herd making a comeback in the area after many years of marginal existence. For more information on exploring the Mecca Hills Wilderness you might consider picking up the Sierra Club Book Adventuring in the California Desert by Lynne Foster.

Revised 11/17/17



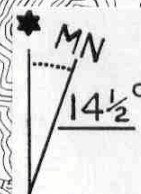
Mercator Projection
WGS84
USNG Zone 11SPT
CalTopo.com





GUIDE NO. 4.6

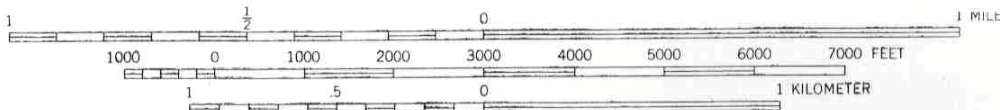
MAP 2



OROCHOPIA CANYON, CALIF.

1958

7.5 MINUTE SERIES



CONTOUR INTERVAL 40 FEET